

Things to Remember for Entering Horticulture Exhibits

- The building and the Entry Books CLOSE at 6:00 pm
- Pay attention to Class Numbers and Division Numbers. They are different at Tulsa vs. OKC
- Have your entries already saved to a thumb drive when you get to the fairgrounds.
- Have your tags already printed and attached to the exhibit when you get to the fairgrounds.

When entering Horticulture Exhibits....

- Don't bring an heirloom container, et al. Things get broken. Don't bring Great Grandmas Water Pitcher for a flower arrangement container.
- All exhibits have to have a students name NOT just a chapter exhibit.
- Only one exhibit per student per class. Otherwise they both get disqualified.
- Only the top placings will be exhibited.
- All vegetable and fruit entries are donated.

Horticulture Exhibits

FFA Division/Tulsa State Fair



Vegetable and Fruit entries



- ❖ Vegetable Entries should be healthy, free of bruising, disease and insects.

- ❖ Exhibits should be clean but not polished.

- ❖ Exhibits should have the correct number of items for that exhibit. (See fair book)

- ❖ All exhibits should be accurately tagged and entered in the entry book. Otherwise they will be Disqualified.

- ❖ Most vegetables are exhibited on a plate with the tag firmly attached.



All the fruit or vegetables in an entry should be of uniform size, shape and color. Refer to the fair book for the correct number for each entry.





Vegetable Baskets

Vegetable baskets should have at least 5 different types of fruit or vegetables and enough of each for the judge to determine overall quality.





Ornamental Horticulture

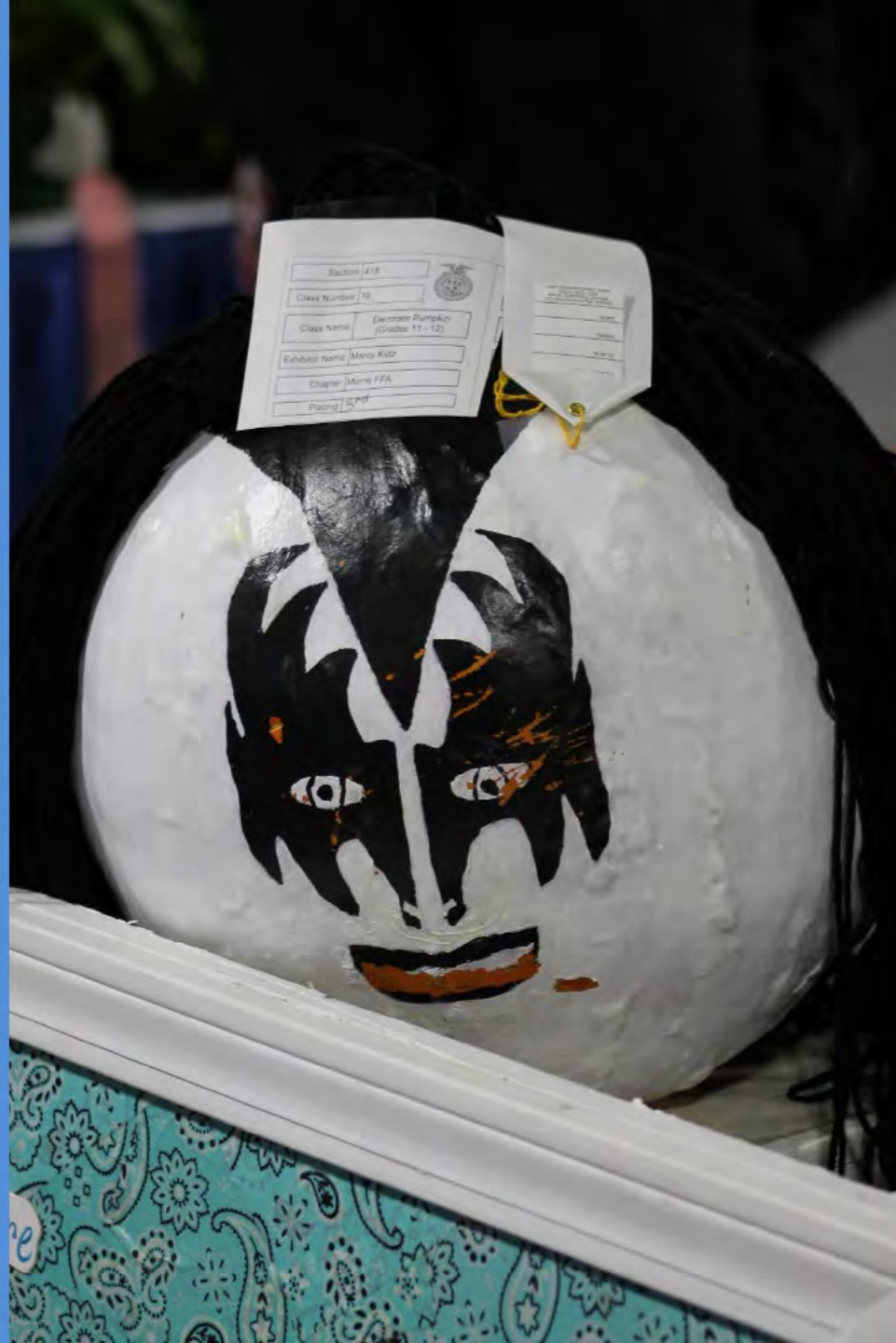
Decorated Pumpkins

Not carved; Pumpkins only

AND only one Pumpkin

MUST BE a REAL PUMPKIN





Section	418
Class Number	19
Class Name	Decorate Pumpkin (Grades 11 - 12)
Exhibitor Name	Mercy Kutz
Chapter	Morris FFA
Placing	1st

Decorated Pumpkins









JOHN DEERE



MOLINE, ILL.

THE TRADE MARK OF QUALITY
MADE FAMOUS BY GOOD IMPLEMENTS



FIFTH
PLACE



It's a bird; It's an eagle; No, it's a Pumpkin!







TSF
#1

Elba
9000

WINNING
PLACE

TULSA
STATE
FAIR



Section	100
Cabin Number	110
Cave Name	Reptile Pumpkin (Grades 11 - 12)
Exhibitor Name	Alex Burns
Chapter	Jenks
Prize(s)	1




Yellow tag with text and a logo. The text is partially obscured but includes fields for name, address, and phone number. A logo is visible in the top right corner of the tag.

THE OFFICIAL
TULSA STATE FAIR



Chris Wright



A white pumpkin is carved to resemble a dog, possibly a Weimaraner, wearing a red cape and goggles. It sits on a wooden table next to a potted plant with long green leaves. Several purple ribbons are scattered on the table, indicating a competition. The background shows a wooden lattice and other items, suggesting an indoor event space.

This was a gourd and
Little pumpkins too
USE ONLY ONE
PUMPKIN



Terrariums are divided into classes for open or closed and by grade level. In most of the classes, the container should be about one gallon in size.

Open terrariums are for plants like cacti or succulents



TENTH PLACE
FFA EXHIBITS

SECOND PLACE
FFA EXHIBITS
& CONTESTS

Section	412
Class Number	39
Exhibitor Name	Boudier, Arlene
Exhibitor Name	(Grades 11 - 12)
Chapter	Ayres South
Planning	Weeks



LSA
STATE
FAIR

Educational Division Exhibits

Greenhouses; Landscape Drawings;
Vegetable Life Cycle Drawings;
Herbarium Books

Developing
Capable Youth
Through Learning
Enhancement



RESERVE CHAMPION
STATE FAIR
HORTICULTURE EXHIBITS
HIGH SCHOOL FAIR

434 - FFA Hort. Ed. Display
Exhibits
22 - Miniature Greenhouse
Ground to Ground

434 - FFA Hort. Ed. Display
Exhibits
22 - Miniature Greenhouse
Ground to Ground

Miniature greenhouses
are divided into three
classes:

❖ Quonset

❖ Raised Sidewall

❖ Even Span (A frame)



Vegetable Life Cycle Drawings

Tulsa State Fair

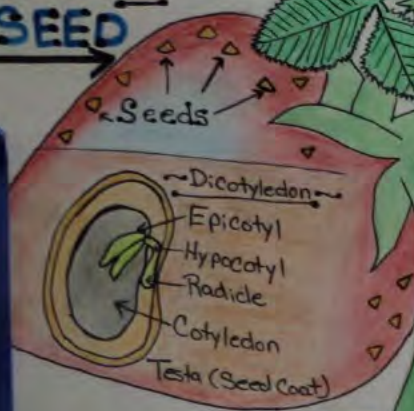
Specific Vegetable Each Year

2017 = Sunflower

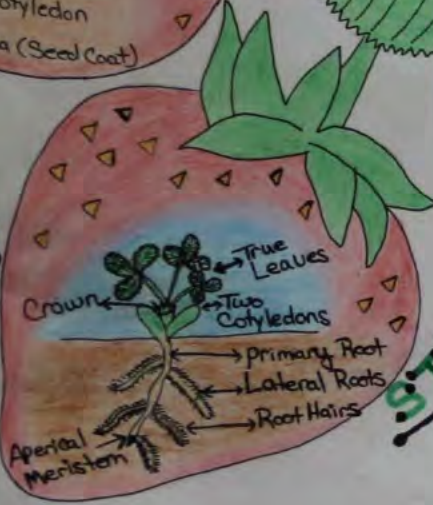
Life Cycle of the Strawberry



STAGE 1 SEED



STAGE 2 SEEDLING



STAGE 3



STAGE 4 FLOWERING



STAGE 5 MATURE

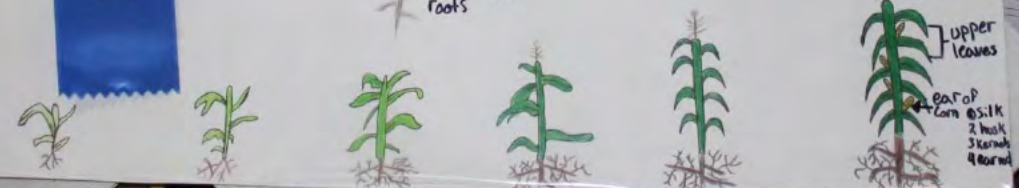
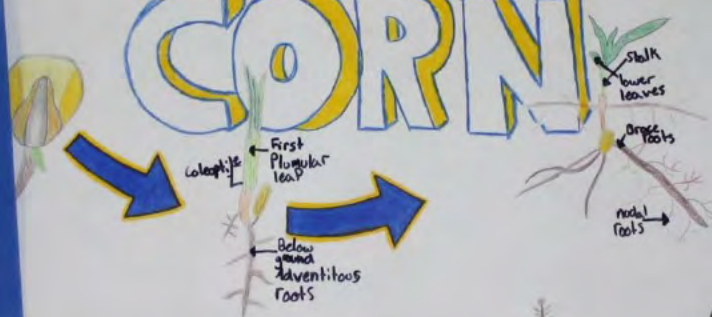


LIFECYCLE OF THE STRAWBERRY

LIFE CYCLE OF CORN

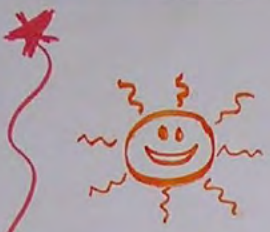


FIRST PLACE
194 JUNIORS & GRADUATES
TOLSON
STATE
FAIR



the Hoslett
523 N Gilbert
Tulsa, OK 74120

Ken
SAE



CREATION OF CORN



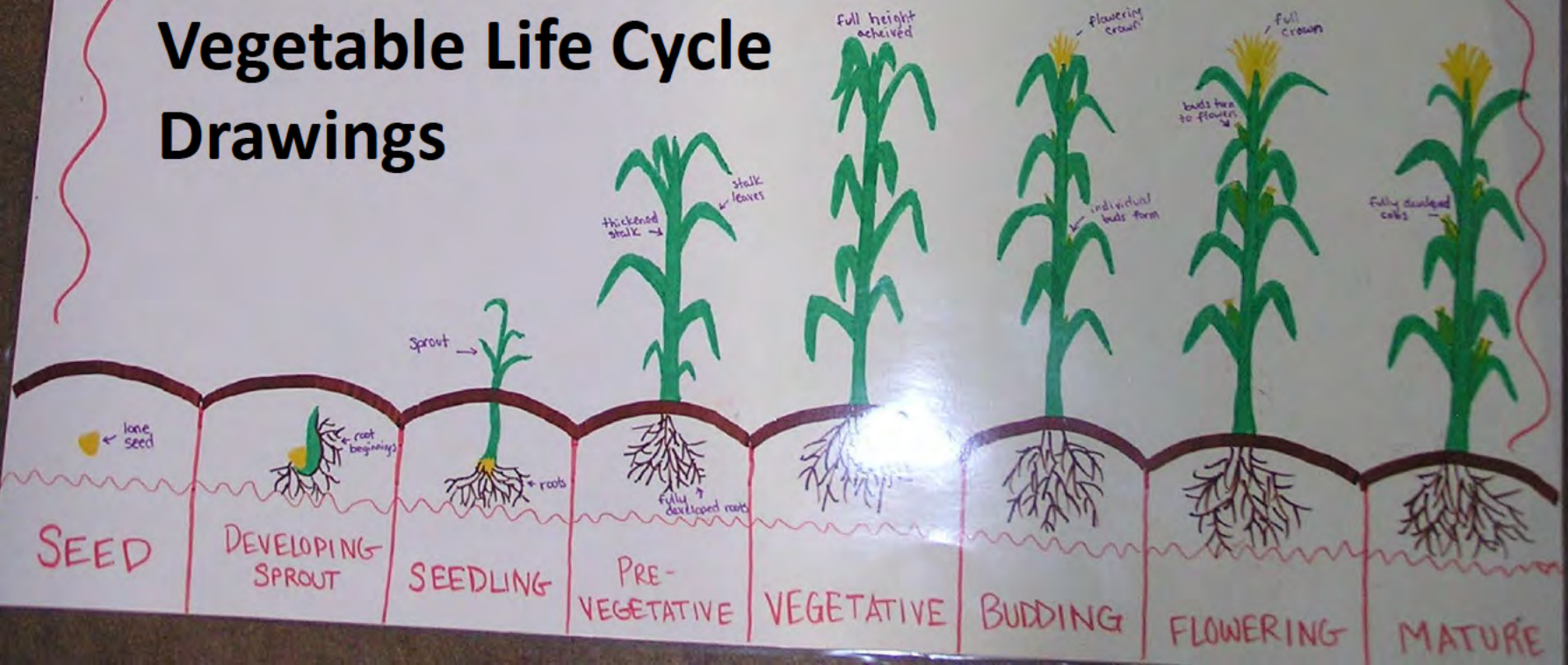
SEED

FROM

TO

STALK

Vegetable Life Cycle Drawings

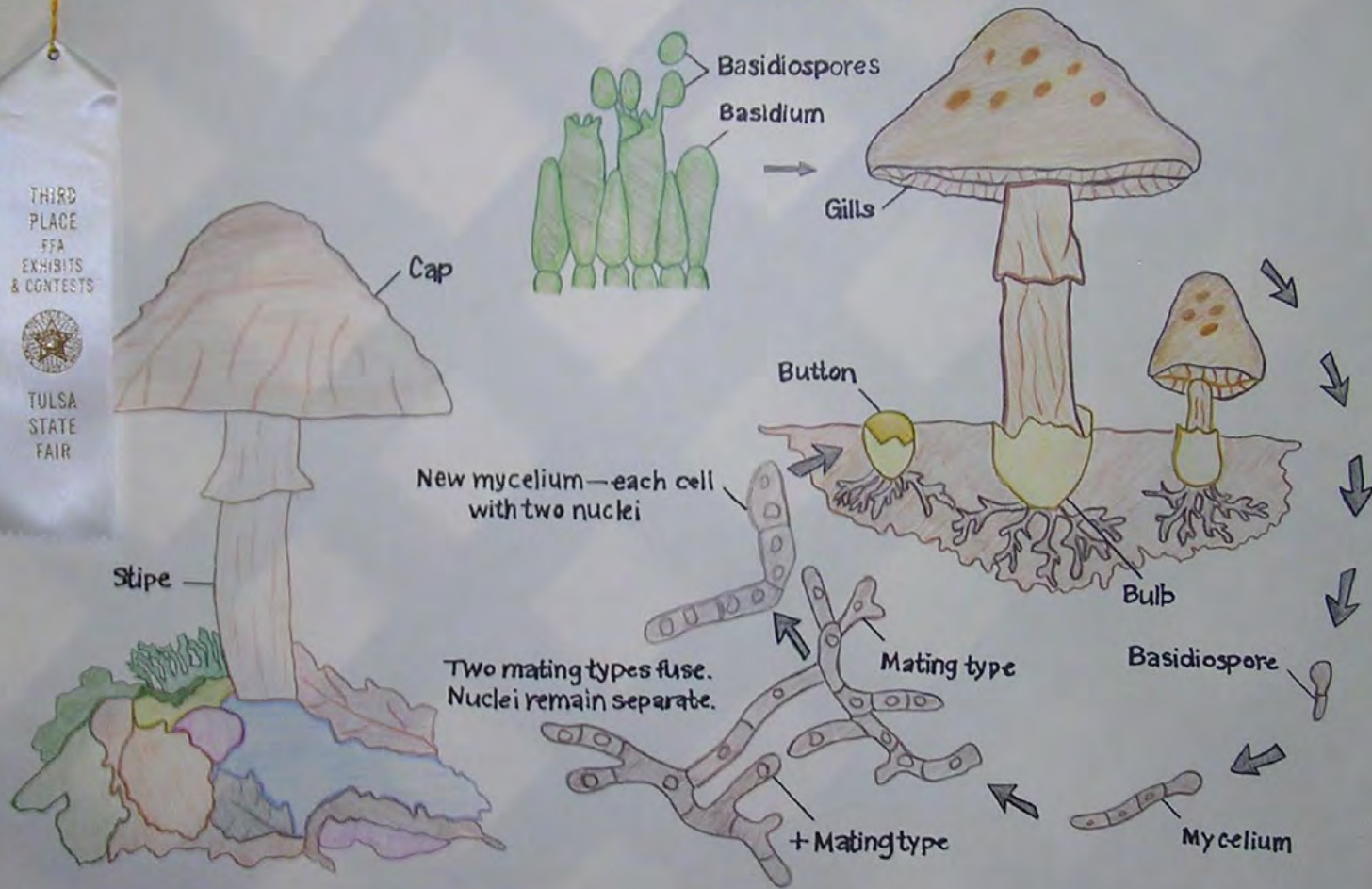


LIFE CYCLE OF A MUSHROOM

THIRD PLACE
FFA
EXHIBITS
& CONTESTS



TULSA
STATE
FAIR

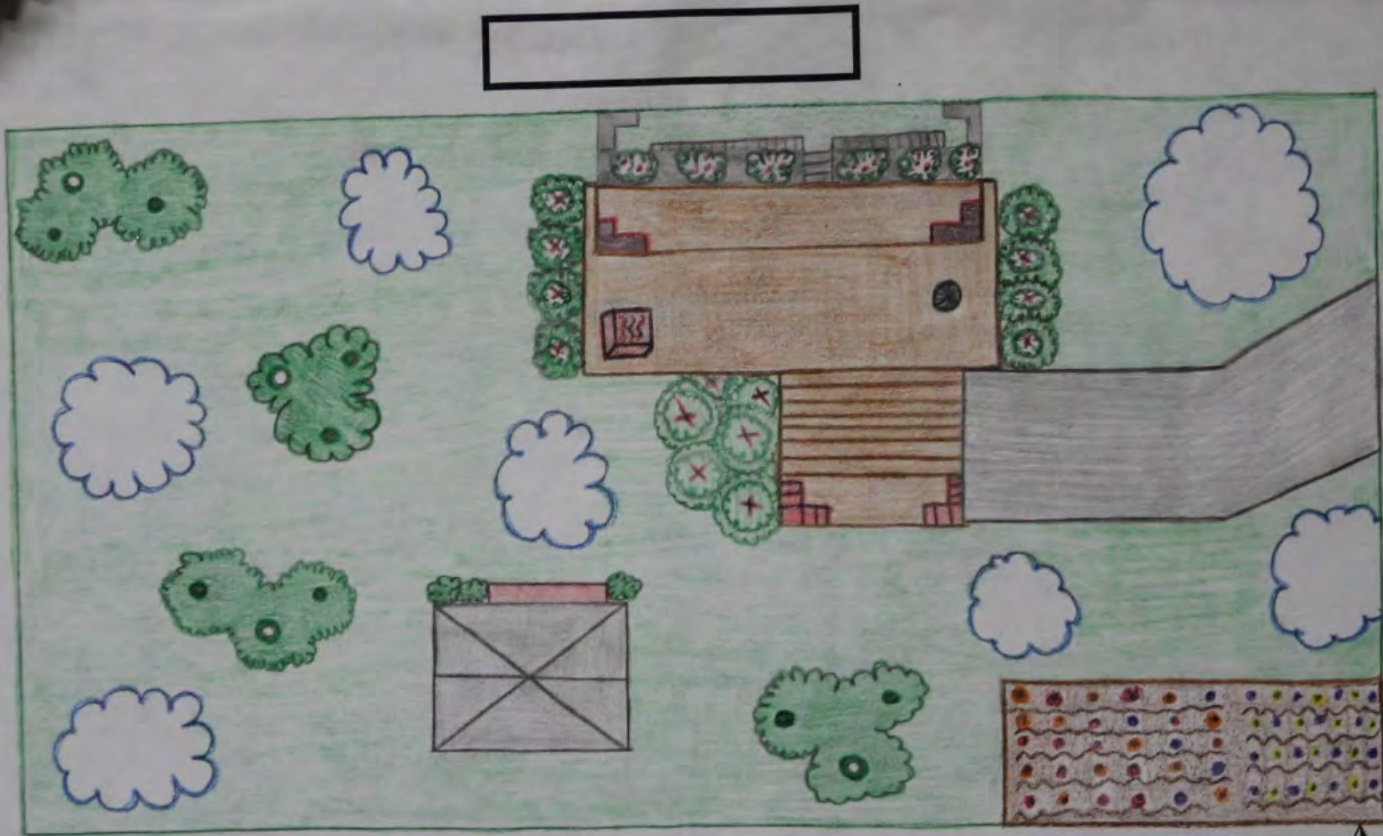


Tulsa State Fair on Black Foam Board

State Fair of Oklahoma on White poster board

Follow instructions in each fair book

HOME LANDSCAPE DRAWINGS



Private Backyard

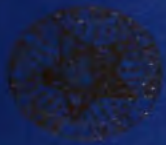
Scale 1"=20'0"



Home Landscape Drawing - Tulsa State Fair

Home Landscape Drawing

FIRST PLACE
FOR EXHIBITS
& CONTESTS



TULSA
STATE
FAIR



RESERVE
CHAMPION
FFA
HORTICULTURE



- #1-54 fence posts
- #2-17 Rocky Mountain Fir
- #3-9 Trident Maples
- #4-1 Acer Palmatum
- #5-15 Helleri Holly
- #6-10 Dwarf Boxwood
- #7-12 Pool Boards
- #8-9 Front deck boards
- #10 fountain
- #11 umbrella
- #12-16 back deck boards
- #12-1 pool
- #13-1 diving board
- #14-1 pool divider
- #15-1 tool shed
- #16-1 shop
- #17-1 pond
- #18-1 walking trail
- #19-Driveway
- #20-1 sidewalk
- #21-1 front walkway
- #22-1 VanBuskirk
- #23-1 FFA
- #24-1 October 21, 2011

Home Landscape Drawing



Key/Legend

Scale: 1"=20'-0"

- 1- Chinese Pistache
 - 2- Callary 'Bradford' Pear
 - 3- Eastern Red Cedar
 - 4- Red Oak
 - 5- Austrian Pine
 - 6- Eastern Hemlock
 - 7- Red Bud
 - 8- Hot Tub
 - 9- Pool
 - 10- Garage/Shop
 - 11- Pond
 - 12- Dock
 - 13- Stream
 - 14- Yew Shrub
 - 15- Crape Myrtle
 - 16- Pansy Flowerbed
- Naomi McCoy
Cushing FFA
September 26, 2011

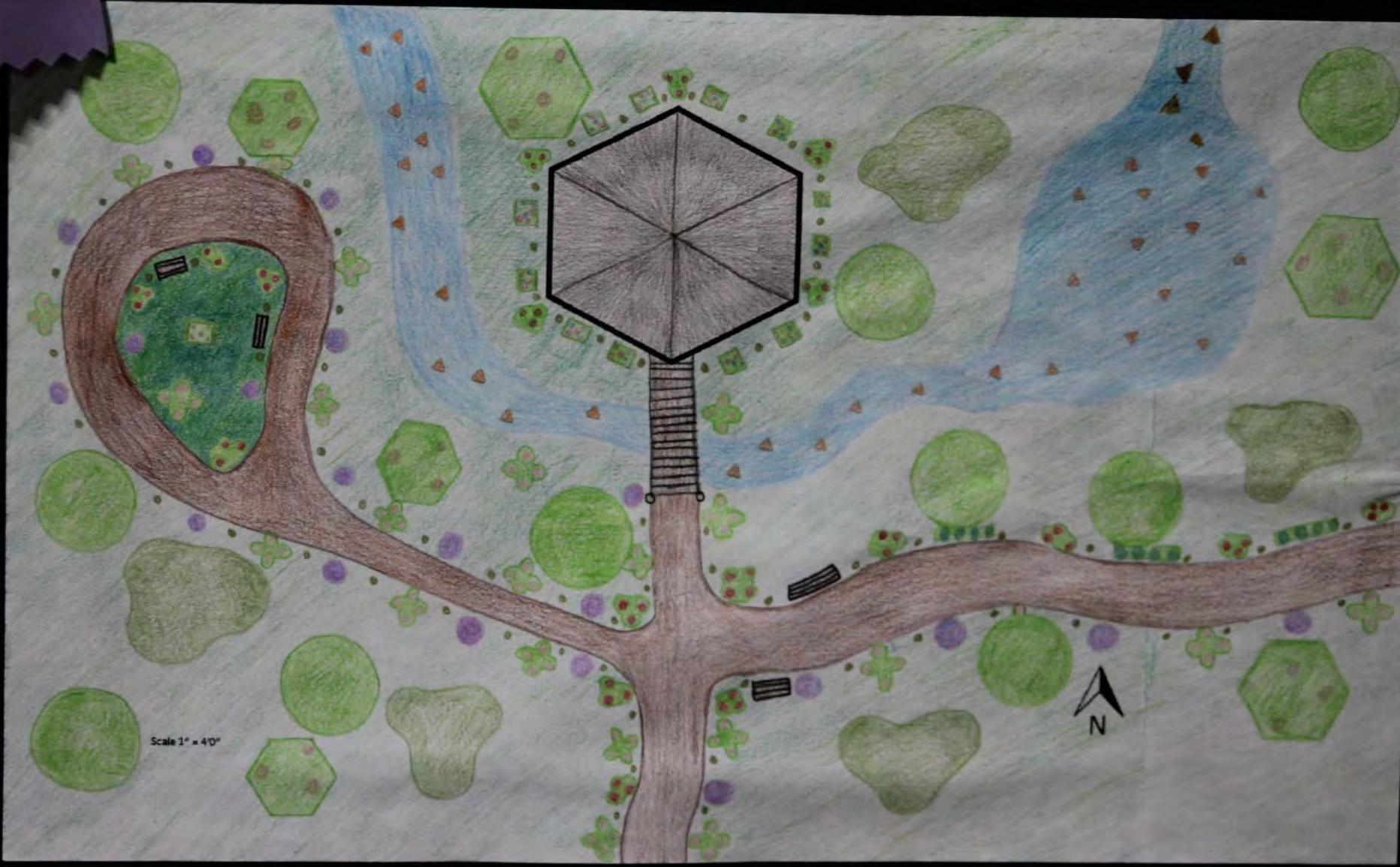
Tulsa State Fair

Follow Instructions in the Fair Book

GAZEBO LANDSCAPE DRAWING

Gazebo Landscape





Scale 1" = 40'



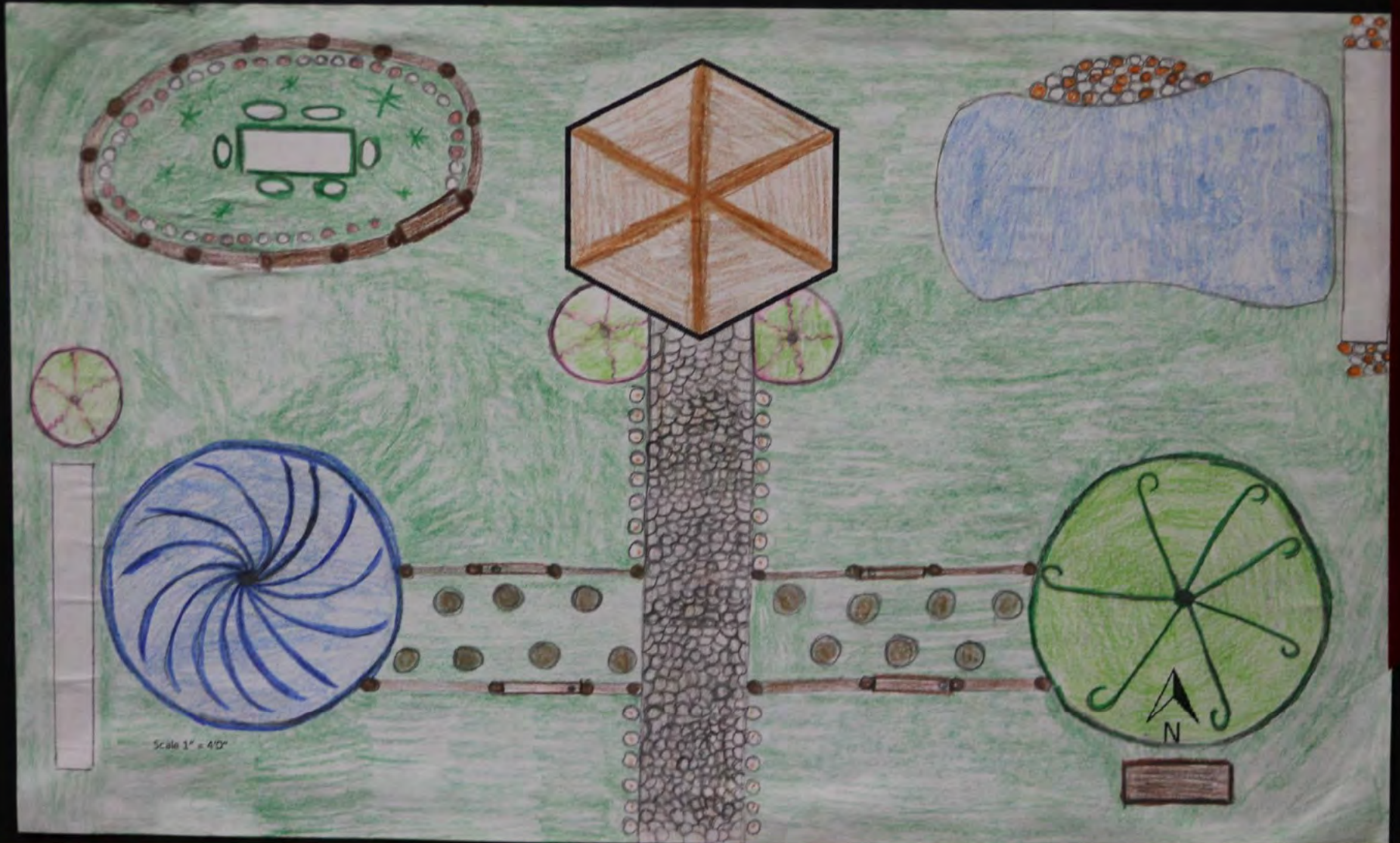
Gazebo Landscape Drawing



SCALE: 1" = 4'-0"

- #1-55 walkway lights
 - #2-22 stepping stones
 - #3-11 lg hexagon stones
 - #4-7 s hexagon stones
 - #5-1 bridge
 - #6-1 large pond
 - #7-1 small pond and stream
 - #8-1 bench
 - #9-29 Blue Star Junipers
 - #10-3 Green Hawthorns
 - #11-1 Katsura
 - #12-1 water fountain
- Jennie VanBuskirk
 Pryor FFA
 September 21, 2011

Gazebo Landscape Drawing

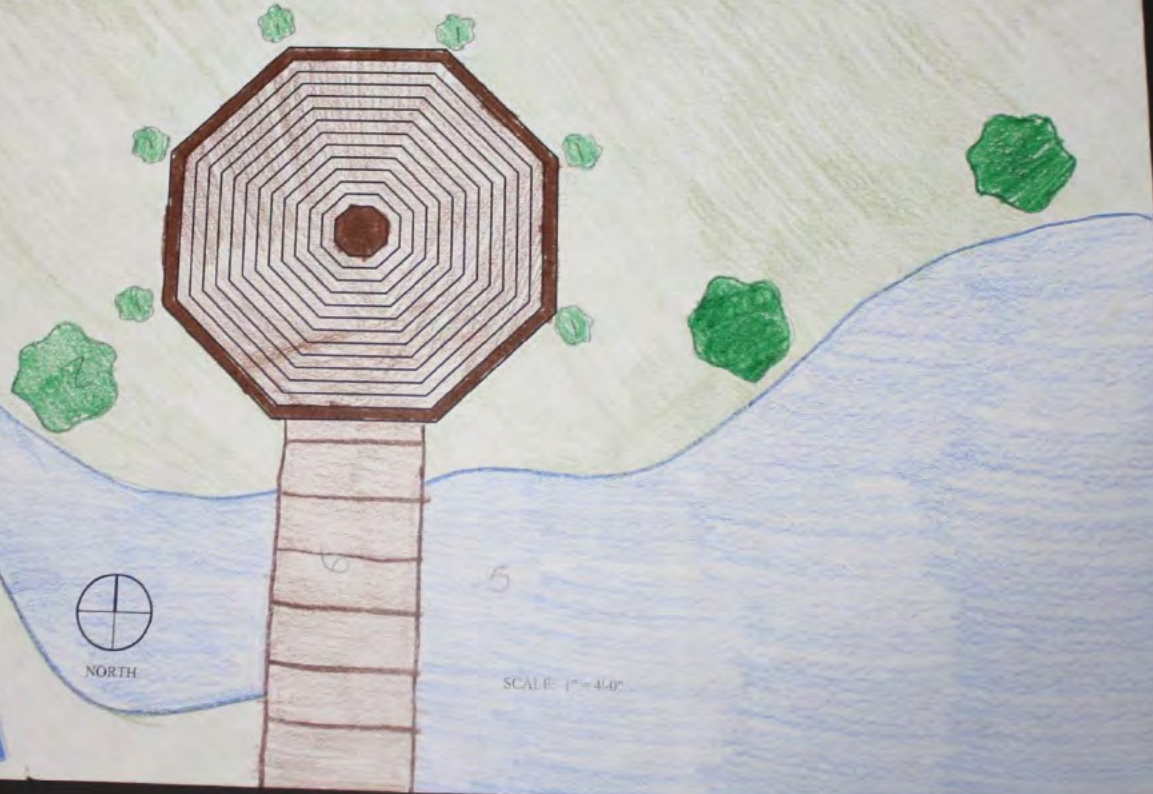


Gazebo Landscape Drawing

FIRST PLACE
FFA EXHIBITS
& CONTESTS



TULSA STATE FAIR



Gazebo

1) 6 hypericum patulum



2) 4 oak trees



3) 3 acer rubum



4) 1 stream



5) 1 pond



6) 1 walk way



Emily Duke
Pryor FFA
September 21,

Gazebo Landscape Drawing

FIRST PLACE
FFA EXHIBITS
& CONTESTS



TULSA STATE FAIR



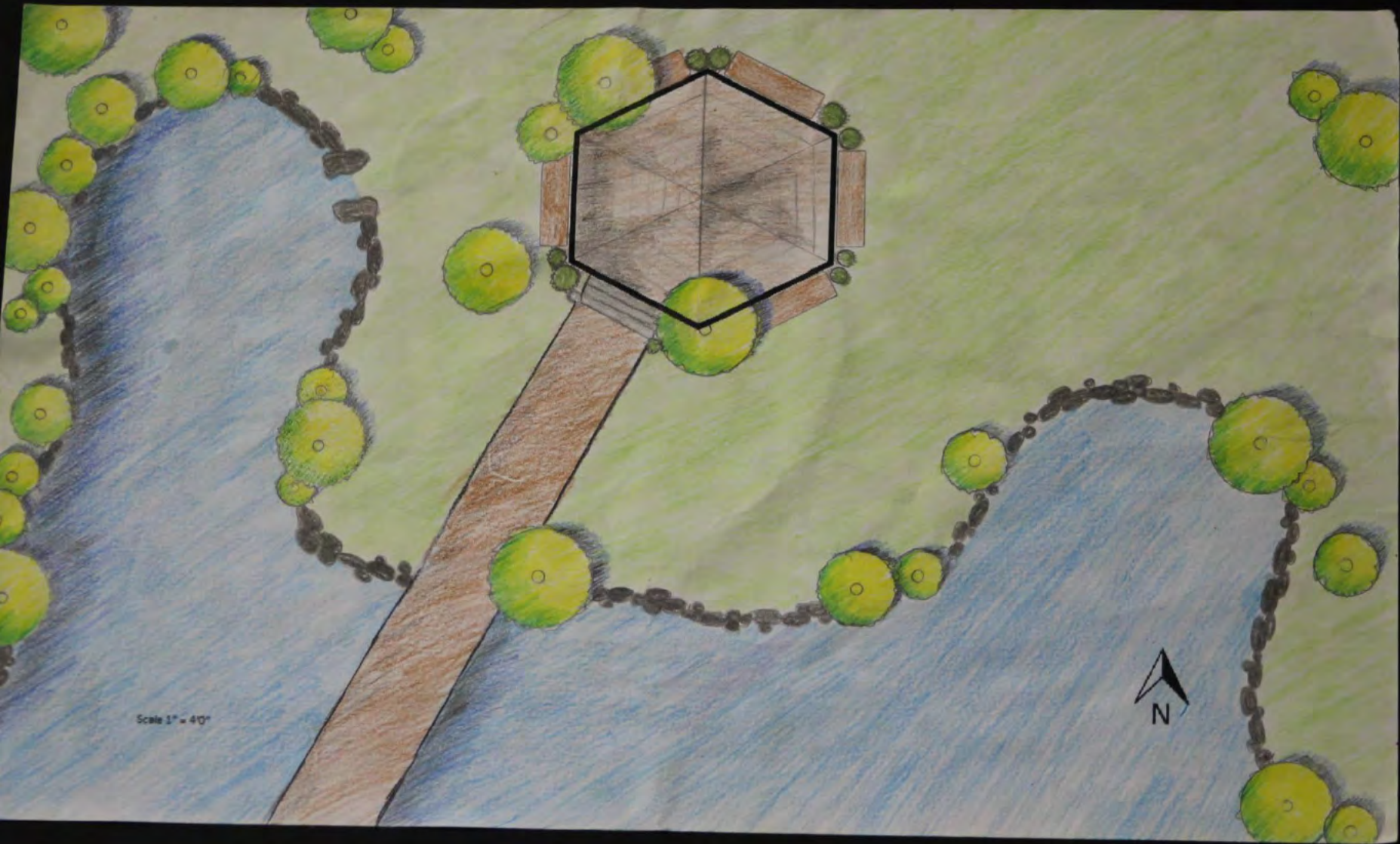
CHAMPION
FFA EXHIBITS
& CONTESTS



TULSA STATE FAIR

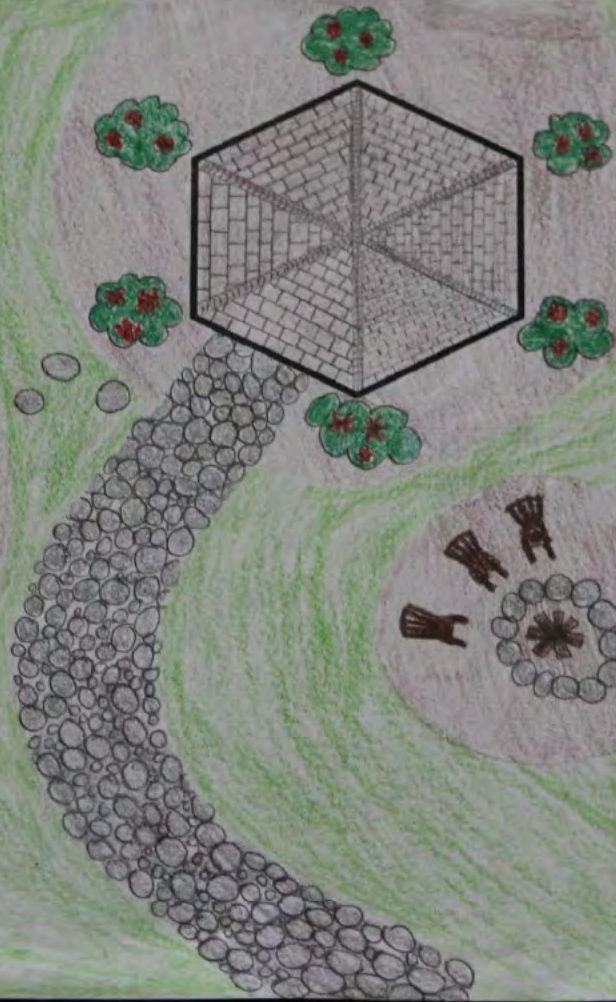


- #1 Big stones
 - #2 Big leaf Hydrangea
 - #3-1 Ben Franklin Tree
 - #4-1 Katsura Tree
 - #5- Rheingold Arborvitae
 - #6- 1 Windmill Palm Tree
 - #7- Pink gravel
- Danielle Goyer
FFA Exhibits
September 21, 2011



Scale 1" = 40'





- KEY
-  - Rose Bush
 -  - Bush
 -  - Lawn Chair
 -  - Cobblestone
- gammie stafford
schmidt FFA

Scale 1" = 40'



Tulsa State Fair

Follow instructions in Fair Book

WATER FEATURE LANDSCAPE DRAWING

WATER FEATURE LANDSCAPE DRAWING

FIRST
PLACE
FFA EXHIBITS
& CONTESTS



TULSA
STATE
FAIR



SCALE

1" = 4'

TREES

- Pecan-3
- Cottonwood-2
- Pecan-2
- Red Oak-1

GRASSES

- Monkey Grass
- Pampas Grass

FLOWER BEDS

- Pansy
- Tulips
- Pothos

Mariah Burden

9-26-2011

Weleetka FFA

Water Feature Landscape Drawing

FIRST PLACE
FOR LANDSCAPE & GARDENS



TULSA STATE FAIR



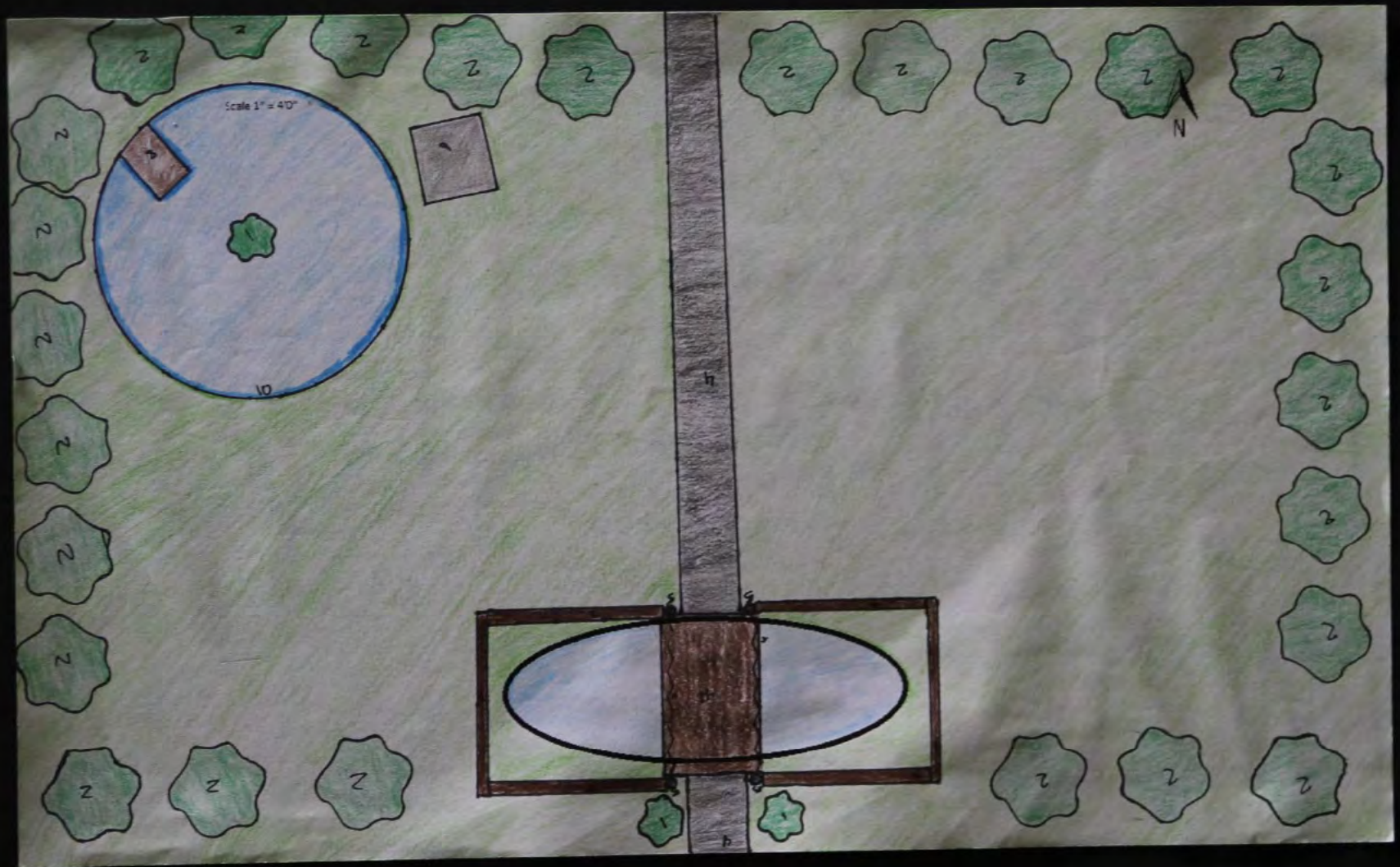
- 1. maple tree
 - 2. rose bush
 - 3. oak tree
 - 4. ever green
 - 5. wood posts
 - 6. picnic tables
 - 7. palm trees
 - 8. road
- bailey weaver
prior ffa
9/23/2011

Water Feature Landscape Drawing



1. Fence Post- 23
 2. Fence- 20
 3. Walking Stone- 33
 4. Dwarf Boxwood- 2
 5. Bench- 6
 6. Palm Tree- 2
 7. Red Oak- 2
 8. Bradford Pair- 2
 9. Yoshino Flowering Cherry- 2
 10. Hybrid Flowering Crabapple- 4
 11. Splash Pad- 1
- Kaitlin Reese
 Pryor FFA
 9-01-16

Water Feature Landscape Drawing

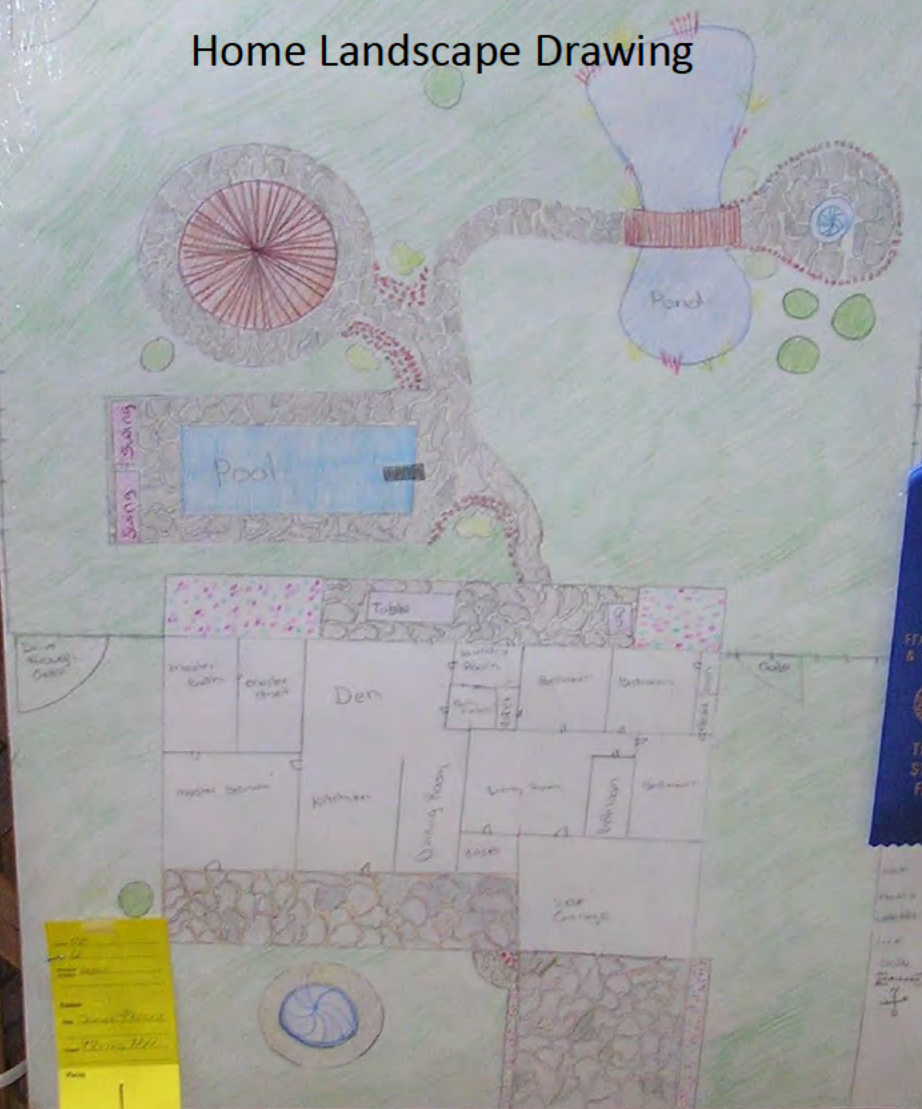


State Fair of Oklahoma

Follow directions in the Fair Book

HOME LANDSCAPE DRAWING

Home Landscape Drawing



Project Name: _____
Date: _____
Artist: _____
Class: _____
Page: 1

FIRST PLACE
FFA EXHIBITS
& CONTESTS

TULSA STATE FAIR



OAK
TREE

OAK
TREE

BERMUDA

DECK

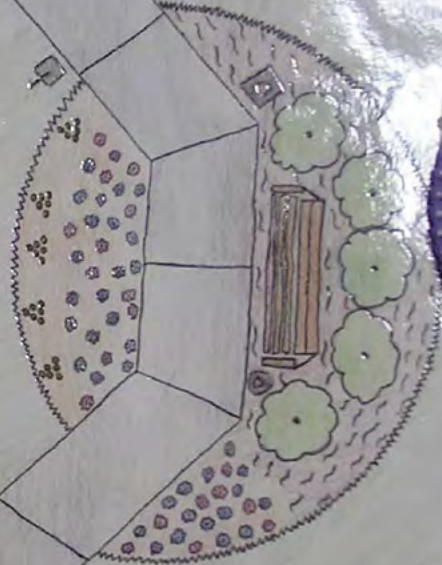
OAK
TREE

s
r
St
BLA
C
BLA
SL
bu
C
C
T
RE
re
T

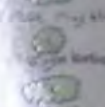
State Fair of Oklahoma

GAZEBO LANDSCAPE DRAWING

Gazebo Landscape Drawing



Legend



TULSA STATE FAIR
RESERVE CHAMPION

State Fair of Oklahoma

LILY POND DRAWING



All landscape drawings must include:

- ❖ The scale of the drawing (see fair book for each class)
- ❖ A legend detailing the specifics of the drawing and listing how many plants are to be purchased or installed.
- ❖ Students name and chapter should appear only on the back of the drawing.
- ❖ All drawings are top view.

State Fair of Oklahoma

Tulsa State Fair

ORNAMENTAL PLANTS



- ❖ Plant Exhibits should be in good health and disease and insect free.
- ❖ Do NOT use any type of polish on exhibits.
- ❖ Plant exhibits must have a saucer for water drainage.
- ❖ Plants should be identified with the entry tag WELL attached.



FIRST
PLACE

Tulsa State Fair

State Fair of Oklahoma

**NO CONTAINERS OVER 12" IN
DIAMETER FOR ORNAMENTAL PLANTS**



THIRD PLACE
FFA EXHIBITS CONTESTS
TULSA STATE FAIR

No plants
exhibited
should be
Over 4 feet
tall.



Dish Gardens





Section	417
Class Number	49
Class Name	Foliage or Blooming Dish Garden (3 specimens or more)
Exhibitor Name	Jaime Crouch

Exhibitor Name	Jaime Crouch
Class Number	49
Section	417
Class Name	Foliage or Blooming Dish Garden (3 specimens or more)
Exhibitor Address	
City	
State	
Zip	
Phone	
Fax	
E-mail	



Dish Gardens: Should have at least 3 different plants in the container.

umpkin (Grade
9)



Section 418
Class Number 12
Class Name CACTI AND/OR SUCкулANTS FOR
GARDEN (3 specimens or
more)
Horton







Tulsa State Fair

State Fair of Oklahoma

FLORAL DESIGN ARRANGEMENTS



Dried
Arrangement
Classes are
divided by
age:
8-10th grade
and
11-12th
grade

Dried Arrangement







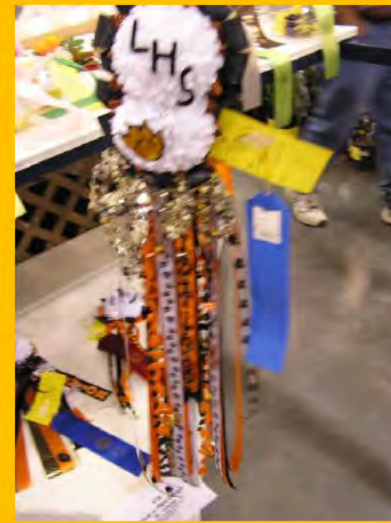


Class Number: 122		Session: 4/8
Class Name: Natural Arrangement (Grades 6 - 10)		
Exhibitor Name: Katelyn Poggeneyer		
Chapter: Kellyville		
Prize(s):		

FIRST PLACE







Homecoming Corsages – Classes divided by Grade: 8-10th grade OR 11-12th grade







I ♥ FOOTBALL

TULSA STATE FAIR

1 Place





FOURTH PLACE

RESERVE CHAMPION



FFA Week Corsage







FFA Week Corsage



Small yellow tag with text, partially obscured.

MI WAY

SIBERIAN

BOY HEAD

SIBERIAN

SIBERIAN

SIBERIAN

SIBERIAN

SIBERIAN

Tulsa State Fair

ARTIFICIAL ARRANGEMENTS



EIGHTH PLACE
FFA
EXHIBITS
& CONTESTS

FFA
EXHIBITS & CONTESTS

Label
Name: JIM MURPHY
County: DEWEE
Phone:
Address:



421
-17
Name: *Carle Davis*
Class: *Kids*
Fair

420
-17
Name: *Kara Cyrus*
Exhibit: *Flowers*
Class: *Juniors FFA*

FIRST PLACE
FFA EXHIBITS
& CONTESTS

THIRD PLACE
FFA EXHIBITS
& CONTESTS

TULSA STATE FAIR









Welcome to Tulsa!
TULSA
Lifetouch



Summer White

Novelty
Arrangement
8-10th grade or
11-12th grade



Novelty Arrangement





EXPO - SO



Novelty
Arrangement
OR
Large Seasonal
Arrangement






Wedding
Bouquets

OR

Wedding
Table
Centerpieces





Seasonal Arrangements: 8-10th or 11-12th
grades. Can be for any season.



Floral
arrangement
Jacob
Sundersen
Guthrie FFA
7
Phone

FIFTH
PLACE







SECOND
PLACE

TULSA
STATE



Grand
Champion Floral
Arrangement
2012 built on a
picture frame.



Grand Champion Floral 2011



SIXTH PLACE
FFA
EXHIBITS
& CONTESTS

FRESH FROM THE FARM

Larry L...

...

...

...









TULSA STATE FAIR

5







Large Dried Wreath: Has only dried materials, no artificial flowers.







Artificial
Wreath: Can
use artificial
and dried
materials.





FIRST
PLACE
FFA EXHIBITS
& CONTESTS

TULSA
STATE
FAIR

FFA EXHIBITS & CONTESTS
TULSA STATE FAIR
EXHIBIT # 1111
EXHIBIT # 1111

FFA EXHIBITS & CONTESTS
TULSA STATE FAIR

TULSA
STATE
FAIR







Tulsa State Fair

SEASONAL WREATHS



RESERVE
CHAMPION



Bless
our
Home



Handmade in USA
A Great Thanksgiving Gift
Available in various colors
and sizes. Visit our website
for more information.
www.example.com



FIFTH PLACE
TFA
EXHIBITS
& COSTUMES
TULSA STATE FAIR

FIFTH PLACE
TFA
EXHIBITS
& COSTUMES
TULSA STATE FAIR

2021
36
Seasonal Wreath
Kilmer
by Sam McElroy

Seasonal Wreath: lg





2

EIGHTH PLACE
FFA



Above: Artificial Wreath

Left: Seasonal Wreath









NAME: JACK NAYLOR
ADDRESS: [illegible]
PHONE: [illegible]

PLACE
NAME
DATE
Sandra Manufacturing Co.
Woodstock, Ga.
800-353-1363

THIRD PLACE
FOR EXHIBIT
CONTACT US
[illegible]

4203 2003 OCT 4



420
76
Seasonal Arrangement
Sunflowers

FLORISTS & GROWERS

Non Floral Design

For wreaths that do not have silk or dried flowers arranged on them.











BIG BUCK
TALES
Told Here

2000
STATE
FAIR



2000
STATE
FAIR





SECOND PLACE
TULSA STATE FAIR

FLOCS

SIMI

WILSON

ES

NA



Wall or Door Swag can be seasonal, novelty or decorative.



There are 2 divisions: Dried and Artificial



Wall or Door Swags: Dried/ natural







Wall or Door Swags: Artificial







Ranch

TENTH PLACE
TULSA STATE FAIR



**Containers for
Landscape/Nursery Plants
Should be no larger than one
gallon.**

**Plants can be entered in
both divisions at OKC But
only 1st division at Tulsa:**

- 1. Propagated this year
(after Jan. 1st)
OR**
- 2. Propagated last year
between Jan 1-Dec 31**

